

Product name	Stopseal Linear Gap Seal
Product Code	T1200D
Revision Date	25/05/09
Revision number	01
Ref	IM SSLGS



## INTRODUCTION

The purpose of this document is to give guidance to approved contractors and suppliers who are engaged in the fire stopping of service penetrations in walls and floors using Stopseal® Linear Gap Seal.

All service holes through floors and compartment walls must be fire stopped to prevent the passage of fire, smoke and hot gases.

### The result of this work will: -

- Prevent the spread of fire, smoke and hot gases through a building by containing it in the compartment of origin.
- Maintain the integrity of escape routes from a building.
- Reduce loss or damage to property from the effect of fire and smoke.
- Maintain pressure differential between compartments and ventilation channels.



## THE STOPSEAL® LINEAR GAP SEAL

Stopseal® Linear Gap Seal is elastomeric acoustic foam laminated with an intumescent compound on both sides.

It is designed to perform as a 2 or 4-hour barrier in construction movement joints. Stopseal® Linear Gap Seal is a flexible water resistant seal that expands when exposed to heat. It can also be used as a fire barrier inside cable trunkings allowing for the installation of further cables.

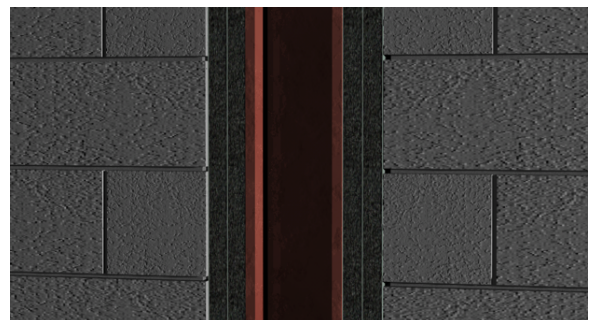
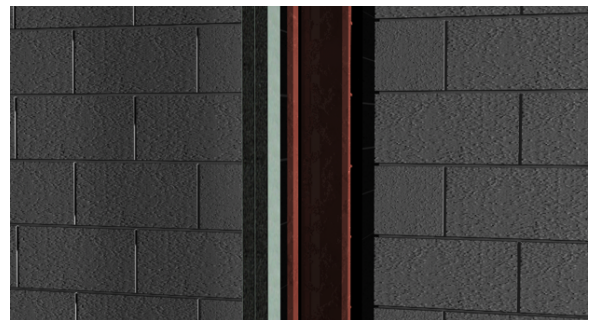
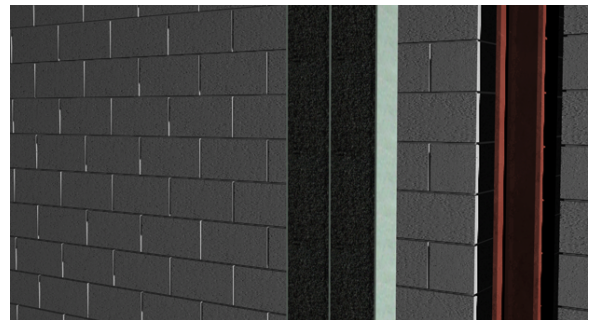
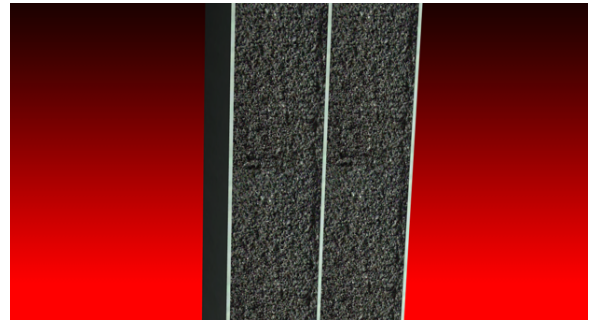
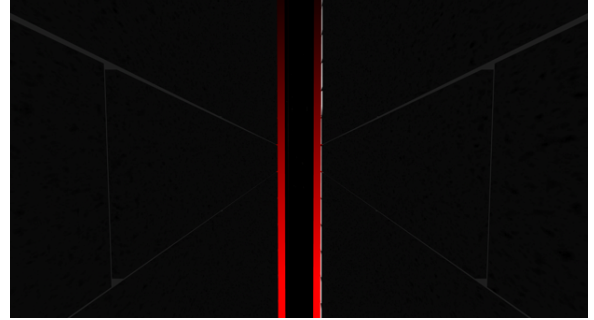


**PREPARATION FOR INSTALLATION**

Before installation measure the void to be filled to ensure the correct size of Stopseal® Linear Gap Seal is being used (see table 1). Clean the surrounding area so that it is free from dust. For trunking boxes tie any loose cables so that they form a tight bunch.

Compress seal between fingers and press into place. Slide in to place to ensure a snug fit to the surrounding building element or trunking. Ensure that core recovers and edge of the seal is flush with the face of the joint.

Seal can be cut easily with a Stanley knife to give correct fitting length.





**FIRE RATING TABLE**

PRODUCT	GAP SIZE RANGE	DIMENSIONS OF SEAL	INTEGRITY RATING	INSULATION RATING
LGS10/2H	Up to 10mm	12 x 12mm	120 minutes	120 minutes
LGS20/2H	11 – 20mm	29 x 12mm	120 minutes	30 minutes
LGS25/2H	21 – 25mm	32 x 20mm	120 minutes	30 minutes
LGS35/2H	26 – 35mm	53 x 20mm	120 minutes	60 minutes
LGS50/2H	36 – 50mm	61 x 35mm	120 minutes	60 minutes
LGS75/2H	51 – 75mm	90 x 50mm	120 minutes	120 minutes
LGS100/2H	76 – 100mm	126 x 100mm	120 minutes	120 minutes
LGS125/2H	101 – 120mm	147 x 125mm	120 minutes	120 minutes
LGS150/2H	121 – 150mm	170 x 100mm	120 minutes	120 minutes
LGS10/4H	Up to 10mm	12 x 25mm	240 minutes	120 minutes
LGS20/4H	11 – 20mm	29 x 25mm	240 minutes	120 minutes
LGS50/4H	21 – 50mm	61 x 50mm	240 minutes	120 minutes
LGS75/4H	51 – 75mm	90 x 75mm	240 minutes	120 minutes
LGS100/4H	76 – 100mm	126 x 125mm	240 minutes	240 minutes
LGS125/4H	101 – 125mm	147 x 125mm	240 minutes	240 minutes
LGS150/4H	126 – 150mm	170 x 125mm	240 minutes	240 minutes





**FIRE RATING TABLE**

<b>CABLE TRUNKING PRODUCT CODE</b>	<b>TRUNKING SIZE RANGE</b>	<b>DIMENSIONS OF SEAL</b>	<b>INTEGRITY RATING</b>	<b>INSULATION RATING</b>
<b>LGS35/2H</b>	Up to 35mm	53 x 20mm	120 minutes	60 minutes
<b>LGS50/2H</b>	36 – 50mm	61 x 35mm	120 minutes	60 minutes
<b>LGS75/2H</b>	51 – 75mm	90 x 50mm	120 minutes	120 minutes
<b>LGS100/2H</b>	76 – 100mm	126 x 100mm	120 minutes	120 minutes
<b>LGS125/2H</b>	101 – 120mm	147 x 125mm	120 minutes	120 minutes
<b>LGS150/2H</b>	121 – 150mm	170 x 100mm	120 minutes	120 minutes
<b>LGS50/4H</b>	Up to 50mm	61 x 50mm	240 minutes	120 minutes
<b>LGS75/4H</b>	51 – 75mm	90 x 75mm	240 minutes	120 minutes
<b>LGS100/4H</b>	76 – 100mm	126 x 125mm	240 minutes	240 minutes
<b>LGS125/4H</b>	101 – 125mm	147 x 125mm	240 minutes	240 minutes
<b>LGS150/4H</b>	126 – 150mm	170 x 125mm	240 minutes	240 minutes

